

Measures, visualizes, documents and analyzes the noise



2 MEASUREMENTS
for Industrial devices and systems

CONFIGURE

- Adjust light settings and visual alarm
- Select output
- Set log settings



MONITOR

- 24/7 monitoring
- Non-stop surveillance up to 6 weeks
- All data is organized automatically in a simple calendar system



ALARM

- Receive SMS notifications at critical noise levels
- Switch off the power with SoundBuster relay box if noise limits are exceeded repeatedly

868 MHZ/915 MHZ

- Up to 235 different locations
- Data transport via Amber wireless USB dongle



SoundEar 3 – 310

Measure, document, visualize and analyze noise levels

The SoundEar 3 – 310 is an ideal tool to monitor and map the noise environment in the industrial work setting.

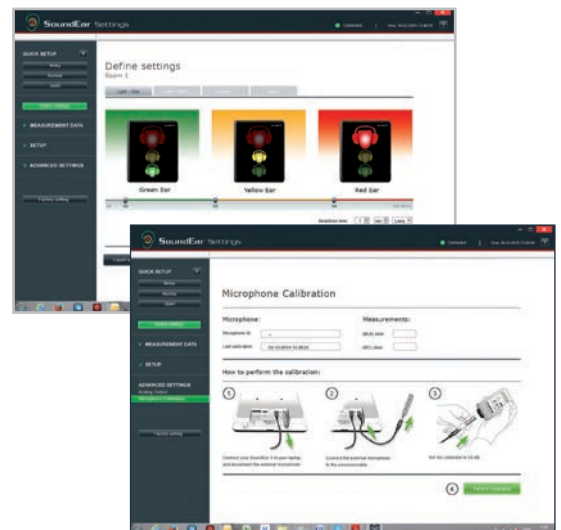
With SoundEar 3 - 310 you get a visual alarm signal, when noise reaches critical levels and hearing protection is required, making it easy to remember when to put on hearing protection.

Connectivities:

The SoundEar 3- 310 has a wide range of connectivities, including USB, Wireless, as well as 3G/4G, WiFi and Cloud compatibility.

Features:

- Easy to understand visualization of current noise levels
- Visual alarm when hearing protection is required
- Including software to monitor noise levels
- Receive notifications of critical alarm levels via email
- Measuring range from 30 dB to 120 dB
- Built-in log that saves LAeq measurements for up to 90 days
- Easy transfer of data to the SoundEar software via USB
- Wireless transfer of data to the SoundEar software
- All measurements are saved in a CSV format and can be opened in Excel



SoundEar®3 software.

Technical specifications:

Frequency Range:	20 Hz – 20kHz
Measuring Level Range:	30 dB – 120 dB
Accuracy:	+/- 0.5 dB
Frequency Weighting:	dB(A) and dB(C) filters
Time Weighting:	Slow (1S) & Fast (125mS)
Dynamic Range RMS:	90dB and Peak detection
Light managing:	Full configurability through SoundEar software, including night setting
Alarm settings:	30-120 dB
Alarm trigger display:	1 sec – 5 min
2 x Outputs (1 for dB A + 1 for dB C):	Either 0-10V or 4-20mA outputs
2 x USB ports:	Micro USB (Power & PC), USB OTG (Log, config)
Display Data:	dB(A) Slow, Leq(A)15, Alarm settings, Temp, Clock

Power Supply:	5VDC (micro USB) / 24VDC (screw terminal), Current consumption: max 2.5W.
Microphone:	20 Hz – 20 KHz
Mass Storage (Internal memory):	16MB (128MBit) (5-90 days log time, depending on log settings)
Real Time Clock:	High-precision type with battery backup (CR2032).
Mechanical Features:	Cabinet: Shockproof acrylic length: 265 mm, width: 205 mm, height: 46 mm Weight: 1.5 kg
Measurements:	
Standards:	IEC61672-2-2002. Type 2, ANSI S1.4 Type 260601-1: Medical electrical equipment - Part 1: General requirements for basic safety and essential performance. 60601-1-2: Medical electrical equipment - Part 1-2: General requirements for basic safety and essential performance

