



Winter knitwear





CE

**ART.VA.NIL**  
SWEATSHIRT  
CREW-NECK  
GR.295

Sweatshirt with lined interior 295 gr / m2. gauzed. Ribbed armholes, neck, sleeve and bottom. Double seams on shoulders and armholes. Material: 50% cotton 50% polyester.

Colour: blue navy.  
(on request 24 colours: grey anthracite, white, orange, yellow, black, graphite etc.).

Sizes: from S to XXL.

Packing: 1/40.

CE

**ART.VA.ALA**  
SWEATSHIRT  
CREW-NECK GR.295  
100% COTTON

Crew-neck sweatshirt, 100% cotton. Inside fabric gauzed 295 gr/m2. Ribbed neck, cuffs, sleeves and bottom. Double seams on the shoulder and armholes.

Colour: blue navy.

Sizes: from S to XXL.

(TG.3XL EXTRA PRICE).

Packing: 1/40.



**ART.P.844MP**  
SWEATSHIRT  
CREW NECK  
"CONTRASTO"

Crewneck sweatshirt. Elasticized neck with line contrast elasticized cuffs and waist. Double needle riveting on the neck, sleeves and hem reinforcing tape inside shoulder to shoulder.

Fababric:  
Gr. 300 (35/65 cot./pol.).

Colours: blue navy, royal.

Sizes: from S to 2XL.

Packing: 10/20.



**ART.CO.DENMARK**  
SWEATSHIRT  
CREW NECK  
GR. 350 WITH  
INSERT

Crew-neck sweatshirt with contrast insert, straight bottom with cuffs. Fabric 100% natural fiber, gives softness the sweater with an excellent cold insulation (antibacterial, protection U V). 47% cotton, 24% soy, 5 spandex®, 5% modal®.

Colours: red/navy, navy/orange, mud/black, anthracite/black.

Sizes: from S to 4XL.

Packing: 1/10.



CE



NEW



**ART.GS.64070**  
SWEATSHIRT  
HALF ZIP  
**100% GAUZED  
COTTON**

Half zip sweatshirt gr. 280, (100% gauzed stabilized cotton) ribbed at the cuffs, and at the bottom. Reinforced seams, bright colors. Raglan sleeves.

Available colors: navy blue, dark gray.

Available sizes:  
from S to 4XL.

(CREW NECK MODEL  
ART. 64069 / CO).

Packing: 5/30.

CE

**ART.SO.00205**  
SWEATSHIRT HALF  
ZIP "ANTHRACITE"

Sweatshirt with zip collar, stretch ribbed bottom and cuffs, design and functionality.

Fababric: Cot/Pol.35/65 gr. 280.

Colour: anthracite.

Sizes: from S to 3XL.

Packing: 1/20.





**ART.P.264MP**  
SWEATSHIRT  
HALF ZIP  
"CONTRASTO"

Turtleneck sweatshirt. Short zipper with removable slider. Elasticized cuffs and waist with line contrast, double needle riveting on the neck, sleeves and hem. Reinforcing tape inside shoulder to shoulder.  
Fabric: Cot/Pol.35/65 gr. 300.

Colour: blue navy.

Sizes: from S to 2XL.

Packing: 10/20.



**ART.SO.08105**  
SWEATSHIRT  
HALF ZIP  
BICOLOR

Half-zip sweatshirt with inner sweatband, bicolor. Cuffs and bottom in stretch jersey.  
Weight: Gr. 280 65/35 cotton / polyester.

Available colors:  
dark gray with black inserts.

Available sizes:  
from XS to 3XL.

Packing: 1/24.



**ART.CAR.64072U/CO**  
SWEATSHIRT  
FULL ZIP  
BEST QUALITY  
**100% cotton**

Sweatshirt with full zip "Best Quality" with two side pockets Stabilized Cotton 100% , double seams, stretched jersey bottom and cuffs. Bright colours. Gr. 280.

Colours available: blue, white, black, grey, royal, orange, red, yellow.

Sizes:  
from XS to 3XL.

Packing: 1/30.



**ART. P.084MP**  
SWEATSHIRT  
"CONTRASTO"  
LONG ZIPPER  
DOUBLE CURSOR

Turtleneck sweatshirt and line in contrast. Long zipper with double removable slider, elasticized cuffs and waist. 2 pockets with zipper. Double needle riveting on the neck, sleeves and hem reinforcing tape inside shoulder to shoulder.

Fabric: Cot/Pol.35/65 gr. 300.

Colori available: Blue navy/white, royal/blue.

Sizes: from S to 2XL.

Packing: 1/20.



**ART.SO.0190E**  
SWEATSHIRT  
FULL ZIP BICOLOR

Sweatshirt with full zip closure, 2 side pockets with zip, collar, cuffs and rib bottom with contrasting stripes. Contrast stitching on shoulders and armhole.

Fabric: 80% cotton, 20% polyester gr.300.

Colours available: royal (on request colore blue navy).

Sizes:  
from XS to 3XL.

Packing: 1/24.



**ART.CAR.64024U**  
SWEATSHIRT FULL ZIP WITH INSERT  
**MADE IN ITALY**

Full zip sweatshirt gr. 330 100% stabilized cotton, two side pockets, full zip, bottom, collar, knit cuffs.

Colours available:  
medium grey with insert blue.

Sizes: from M to 2XL.

Packing: 1/30.



**NEW**



**ART.SO.0150E**  
SWEATSHIRT FULL ZIP WITH HOOD

Full zip hooded sweatshirt. 2 side pockets, double rib at the cuffs and waist, hood with drawstring.

**Material:**  
65% cotton, 35% polyester,  
280 g / m2.

**Available sizes:** XS to 3XL.

**Available colors:** navy blue / white.

(On request: black, royal, red, purple / white).

**Packing:** 1/24.

*woman*

**NEW**



**ART.CO.CAROLINA**  
SWEATSHIRT FULL ZIP "WOMAN"

Full zip women's sweatshirt, gr. 280. 80/20 cotton / polyester. Complete with 2 large front pockets, knitted bottom and cuffs.

**COLOR:**  
Colors: navy blue with black inserts.

**Available sizes:** from S to 2XL.

**Packing:** 1/20.



**ART.BEC.ST5020**  
LIGHT FLEECE HALF ZIP GR.170

Anti-pilling, micro fleece, Half zip, 2 front pockets, bottom cap.

**Colours available:** dark grey, black, red.

**Sizes:** from S to 2XL.

**Packing:** 6/24.

**NEW**



**ART.PEP.GGX27300**  
LIGHT FLEECE HALF ZIP

Microfleece 200 gr / mq with contrast stitching and short zip color fluorescent. Material: 100% polyester.

**Colour:** blue with lime green contrast, gray with orange contrasts.

**Sizes:** from S to 3XL.

**NORMA:** EN13688/2013.

**Packing:** 1/20.



**ART.BEC.FU704**  
FLEECE ANITIPILLING HALF ZIP

Half zip fleece with tone-on-tone zip, two side pockets, elastic drawstring at the bottom hem, with adjuster. Material: 100% antipilling fleece gr.300.

**Colours available:** blue navy. (on request: black, grey, red).

**Sizes:** from XS to 3XL.

**Packing:** 5/15.



**ART.CAR.66361U**  
FLEECE ANTIPILLING FULL ZIP, WITH TWO POCKETS

Fleece antipilling full zip, with two cargo pockets zip clouser. 100% polyester, gr. 280.

(Available with half zip, many colours, art. CAR.66360U).

**Colours:** red, anthracite, grey melange light, blue navy, green.

**Sizes:** from S to 2XL.

**Packing:** 1/18.

**AN** **MG** **BL** **RS** **VE**  
ANTRACITE GRIGIO MEL BLU NAVY ROSSO VERDE



**ART.BEC.FU703**  
FLEECE FULL ZIP  
POCKET/ HINGE

Full zip stack, 2 side pockets with zip closure. Elasticated cord at the bottom of the jacket with stopper and "easy-to-pull rings".  
Weight: gr. 300.

**Colour:** blue navy.

(on request: red, grey, black).

**Sizes:** from XS to 2XL.

**Packing:** 5/15.



**ART.SI.LINDAU**  
FLEECE  
FULL ZIP

Fleece (2 layer), breathable, "to be combined with waterproof jacket ILS", anti-pilling treatment. Reinforced seams. Straight collar, zip closure, 2 pockets with zip closure, round insert sleeves, elastic cuffs, elastic hem in elastic.

**Material:** fleece 2 layer gr. 285.

**Colour available:** blue navy.

**Sizes:** from S to 3XL.

**Packing:** 1/10.



**ART.BEC.JN762**  
FLEECE JACKET  
TWO LAYERS  
"MAN"

Two-layer fleece jacket, exterior: 100% polyester, interior: soft fleece. Side pockets with zip, contrast lining on sleeves and cuffs, pocket on zip.

**Weight:** 280g / m2.

**Colour:** dark grey/nelange, royal/melange.

**Sizes:** from S to XXL.

**Packing:** 1/30.



**ART.BEC.JN761**  
FLEECE  
JACKET  
TWO LAYERS  
"WOMAN"

Two-layer fleece jacket: 100% polyester, inside: soft fleece. Side pockets with zip, contrast lining on sleeves and cuffs, pocket on zip.

**Weight:** 280g / m2.

**Colour:** dark grey.

**Sizes:** from S to 2XL.

**Packing:** 1/30.



**ART.SI.MERIDA**  
FLEECE FULL ZIP  
(TWO LAYER) GR.285  
"MERIDA"

Fleece (2 layer), breathable "to be combined with waterproof jacket ILS mod.Tornhill/Cumbria", anti-pilling treatment. Straight collar, YKK zip closure, 2 pockets with zip closure. Hem finished with elastic fabric. Drawstring at the bottom of the head. Sleeves with elastic.  
**Material:** fleece two layers 100% polyester gr. 285.

**Colour available:** grey.  
(on request colours: red, blue navy, black).

**Sizes:** from S to 3XL.

**Packing:** 1/10.



**ART.SI.DURANGO**  
FLEECE FULL ZIP  
(TWO LAYER) GR.285  
"DURANGO"

Fleece (2 layer), breathable "to be combined with waterproof jacket ILS mod. Cuczo/Tornhill", anti-pilling treatment. Straight collar, YKK zip closure, 3 pockets with zip closure, contrast insert. Elasticated hem. Windbreaker lining in front and back. One inside pocket.

**Material:** fleece two layers 100% polyester gr. 285.

**Colour:** black/grey.

**Sizes:** from XS to 3XL.

**Packing:** 1/5.





**ART.VA.ECRA**  
CARDIGAN  
FULL ZIP  
BICOLOR

Full zip collar cardigan. Reinforced with twill cotton on elbows. Left pocket with zip. 2 side pockets. 100% acrylic. Fabric big knit 525 gr / m<sup>2</sup>.

Colour: dark grey/grey.

Sizes: from S to 3XL.

Packing: 1/20.



**ART.CAR.70053U**  
GILET FLEECE  
FULL ZIP

Gilet fleece full zip, two pockets with closeure with zipper. 100% polyester gr. 280.

Colour: Anthracite, light grey, navy, green bottle, red.

Sizes available: from S to 2XL.

Packing: 1/20.



**ART.CO.BUCAREST**  
JEANS SHIRT  
STRETCHING  
FABRIC

Long sleeve shirt, 1 left arm pocket, 2 chest pockets, good washing resistance, good abrasion resistance, side pads, elastic fabric.

COMPOSITION: 70% Cotton - 27% Polyester - 3% Elastane. Gr. 230 g / m<sup>2</sup>.

NOT DETECTABLE BY METAL DETECTORS.

Sizes: from S to 4XL.

Packing: 1/30.  
Taglie: dalla S alla 4XL.

(AVAILABLE: LIGHT VERSION ART. PEL. ARUBA).



**ART.CO.EASY**  
SHIRT LONG  
SLEEVE WITH  
PIPING

Shirt long sleeve with piping. Chest two pockets closed with button. Fabbri: cotton gr. 190.

Colour: Grey (on request: ecrù, light blue).

Sizes: from S to 4XL.

Packing: 1/15.



**ART.CO.BAHIA**  
LONG SLEEVE  
SHIRT VELVET

Long sleeve shirt in cotton and lycra velvet (97/3%), double chest pocket with one flap closure and one with concealed zip, side opening, sweatband. Gr. 265.

Colours available: Blue navy (on request: ecrù, grey).

Sizes: from S to 4XL.

Packing: 1/30.



**ART.CAR.32358U**  
LONG SLEEVE SHIRT  
POPELINE

Popeline long sleeve shirt 100% cotton gr. 120. Button collar. Light buttons. One chest pocket.

Colours: black, white, navy, royal, light blue.

Sizes: from S to 2XL.

Packing: 4/24.



**ART.PEL.2019L**  
LONG SLEEVE  
SHIRT POPELINE

Long sleeve shirt with collar buttons, chest front pocket. Fabric fill to fill 100% cotton gr.107.

**Colours available: white, light blue.**

**Sizes: from S to XXL.**

**Packing: 1/10.**

(Available also version half sleeve).



**ART.BEC.JN633**  
WOMAN SHIRT  
WITH ELASTAME

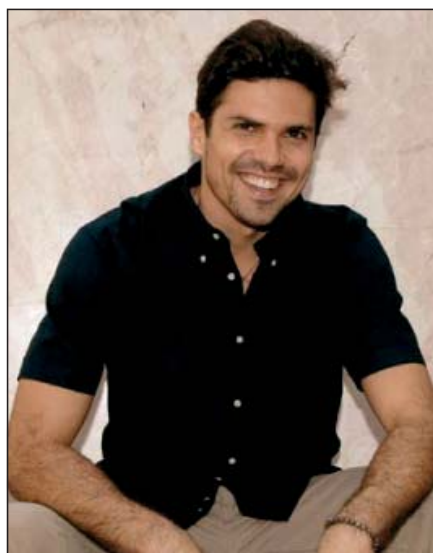
Long sleeve shirt, internal neck and cuffs design with stripes in contrast. Manufactured ideal for woman. Pince on front and back, cuffs complete of double button.

Fabric: popeline 95% cotton, 5% elastane. Gr. 120 gr/m2.

**Colour: navy/redwhite, red/navywhite, blue/navy-white, graphite/red-white.**

**Sizes: from XS to 2XL.**

**Packing: 5/20.**



**ART.CAR.32258U**  
SHIRT HALF  
SLEEVE  
POPELINE

Popelin half sleeve shirt 100% cotton gr. 120. Button collar, one chest pocket. Light buttons.

**Colours available: black, white, blue navy, royal, light blue.**

**Sizes: from S to 2XL.**

**Packing: 4/24.**



**ART.CAR.30050U**  
POLO LONG SLEEVE  
GR 200  
(100% COT. PIQUET)

Long sleeve polo, three button buttonhole opening, reinforcing tape on neck and shoulders. 100% cotton piquet gr. 200 .

**Colours available: blue navy. (on request: black, royal, green, red, orange, white, grey melange con extra price).**

**Sizes: from S to 2XL.**

**Packing: 1/24.**



**ART.BEC.JE710M**  
PULLOVER WITH  
NECK "V"

V-neck pullover, sleeve cuffs and waistband, round sleeve. Washable at 40 °, resistant to the dryer. Fabric: 50 cotton / 50 acrylic. gr. 275.

**Colours available: blue, black.**

**Sizes: from S to XXL.**

**Packing: 1/12.**



**ART.BEC.JN658**  
PULLOVER WOMAN  
NECK "V"

Women's V-neck light weight. Machine washable gr.260, 100% cotton fabric.

**Colour: anthracite, grey, navy, black.**

**Sizes: from S to 2XL.**

**Packing: 1/30.**