



Outdoors furnishing, workspace matting



Outdoors furnishing, workspace matting

ARTEF.B307 SPIRAL BIKE RACK "MAESTRALE"



Bicycle rack line MAESTRALE A SPIRALE cm 100 made entirely of stainless steel AISI 304 (also available in galvanized version). **Available lengths up to 312 cm.** **Packing: 1/1.**

ART.ST.1424020 - RDT/80
TOTEM "RONDO SIGNAL"
CUSTOMIZABLE

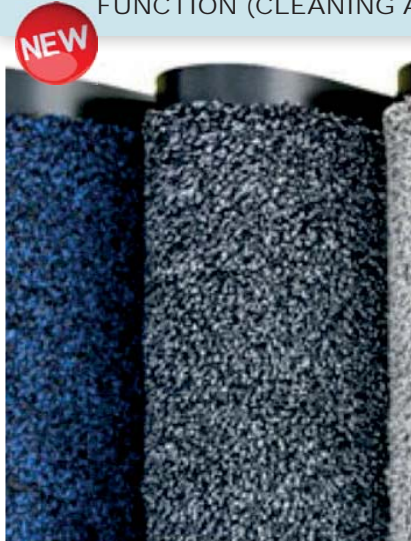


Self-supporting information structure on alubond mm3, composed of two uprights with painted metal base, customizable panel on both sides. (Useful cm 70x177), complete with fixing clamps. Suitable for both indoor and outdoor environments. Color: aluminum. **(Customize excluded).**

Dimensions: alt. cm. 190/180, width 70 cm. - Weight Kg. 20.

Packing: 1/1.

ART.OS.DIME1
MAT "DIME" - 90X150 DOUBLE
FUNCTION (CLEANING AND DRYING)



Double vinyl curl entrance mat complete with perimeter non-slip edge. Ideal for shoe cleaning and drying. Product positioning: building entrances to remove and trap dirt and water from shoes for pedestrian traffic. Also used in interior walkways and corridor areas. Tested Fire Class 1. Resistant to UV rays. Color: anthracite grey. Dimensions: height. cm 90, length. 150 cm.

(available also in misure 60x90 art. OS.DIME2, rool h. 135 length. 20 ml with cut to size art. OS.DIME3.

Packing: 1/1.

ART.CB.ALASKA
MAT DRY FOOTPRINT WASHABLE AT 60°
60X85



Made of HTN and equipped with a vinyl / rubber support, so easy to clean in the washing machine. (60C), highly absorbent and natural in appearance. Ideal for walking in and out. Fire class 1.

Color: anthracite grey. (also available in roll on order)

Size cm. : width 60 height 85.

Packing: 1/12 pieces.

ART.CB.INON
MAT DRY FOOTPRINT 85X115



Made of HTN and equipped with a vinyl / rubber support, so easy to clean in the washing machine. (60C), highly absorbent and natural in appearance. Ideal for walking in and out. Fire class 1. Color: anthracite grey. (also available in roll on order).

Size cm. : larg. 85 alt.115.

Packing: 1/6 pieces.

(Also available in 115x200 size Art. CB.INONEX)

ART.CB.PRIME EXCLUSIVE
MAT DRY FOOTPRINT CUSTOMIZED YOUR LOGO

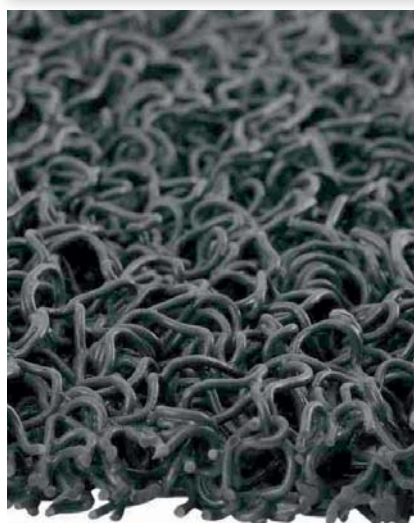


Mat dry foot with printed nitrile bottom. Double edge in nitrile rubber. Customized with your logo (to be delivered in high resolution JPG). Guaranteed 200 industrial washings. Gr. 900 gsm.

Certified CFL1. Dimensions: 85X150 cm.

Packing: 1/1

ART.GI.DRENANTE CARPET FOR OUTDOOR AND INDOOR



PVC curl carpet suitable for outdoor use. Tested Fire Class 1. Resistant to UV rays.

Color: grey or anthracite.

(available on order colors: red, natural, brown and black)

Dimensions cm.: h.120 x 600, thk. mm 14 .

Packing: 1/6 pcs.

(we make the cut to size).

ART.GI.RTRALLY PVC MAT WITH BOTTOM



PVC roll with 8/9 mm support. Ideal as an office entryway. Tested Fire Class 1. UV resistant.

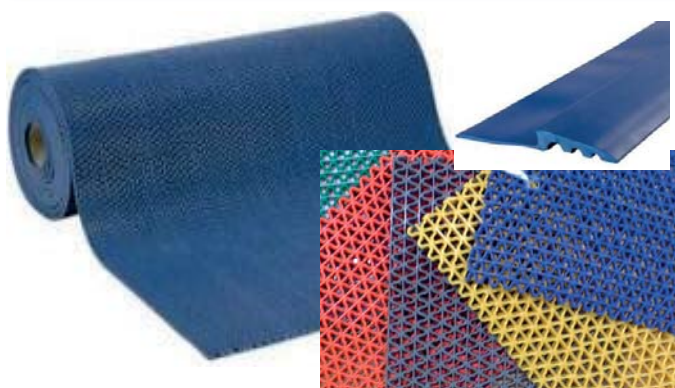
Color: medium grey.

Dimensions: H.cm. 120, lenght.600 cm.

Packing: 1/1.

(we make the cut to size).

ART.ZIG ZAG 3D ROLL 3D VYNIL



3D rolls thick mm 5 or mm 12. Roll length: mt. 15, roll height 122/90 cm. Resistant to UV rays. Reaction to fire in class two. Particularly suitable as anti-fatigue mat behind counters, or behind workstations.

ART.CB.SS010001 COVERING FOR WORKING PLACES



Robust ergonomic tile modules in natural rubber (Fatigue-Step). They prevent disturbances arising from long periods in an upright position effectively. Safe drainage thanks to the construction surface open. R10 anti-slip resistance, according to EN13552. Resistant to temperatures -20 ° + 160 °. Thickness: 19 mm. Borders with 75mm x 1m corners (optional) Black colour. (also available in nitrile rubber).

Dimensions: height cm.90, length 90 cm.

Packing: 1/1.

ART.CB.GRP010003 GRAY COVER FIBERGLASS 80x120



Grid cover in fiberglass, 5 mm overall. Resistance to fire and slipping. To be placed on the floor. Suitable for the passage of forklifts EN 13501, EN ISO 9239-1, ISO 11925-2, Classification R13. Color: black, yellow, grey.

Dimensions cm. : width 80 alt. 120.

Packing: 1/6 pieces.

ART.CB.CDS010001C ROTOLO "COBADOT" H. CM. 120



Cobadot nitrile (natural rubber / nitrile). Ideal for industrial and commercial environments. Studded surface is elegant and functional, for greater grip underfoot. Extremely resistant to oils, greases and chemical degradation. It can be spread or glued to the floor surface.

Product thickness: 3mm. H. roll cm. 120 customized length (maximum mt.10).

Black colour.

Packing: 1/1.

Outdoors furnishing, workspace matting



NEW

ART.CB.DTB010003C CARPET WELDING "DIAMOND TREAD"

Ergonomic rug two layers with non-slip diamond plate surface. Double layer: lower side in PVC foam and robust flame retardant upper side. The bevelled edges reduce the risk of tripping. Prevents disturbances arising from long periods in an upright position effectively and safely.

Fire class Cfl-s1, flame retardant (DIN 4102 class b1), EN 13501.

Dimensions: larg. cm. 90

Thickness: 12.5 mm
custom length (up to 18.3 meters).

Packing: 1/1.

ART.CB.SD010707C - MAT ANTIFATIGUE DECKPLATE CON EDGE ANTI STUMBLE YELLOW



NEW

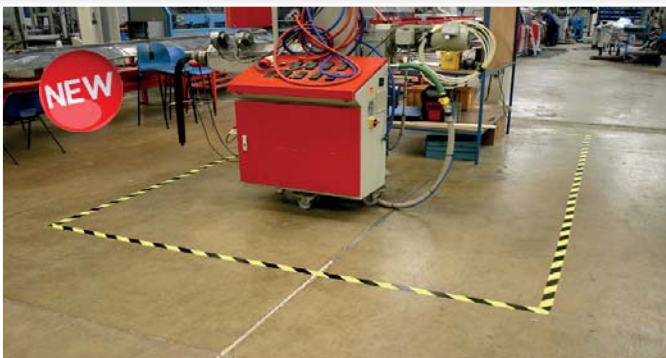
Vinyl and foamed PVC, diamond pattern, self-extinguishing, provides resilience to many chemicals. Optimal as a support for fatigue relief. Supplied with bright yellow ramp edges. Product height: 14mm. Operating temperature: 0 ° to + 60 ° C. Typical applications: packing stations, assembly areas. Fire class 1.

Color: black / yellow.

Dimensions: alt. cm.90, lung. to measure (MAX 18 MT).

Packing: 1/1.

ART.CB.TP010702 ADHESIVE TAPE FLOOR SIGNAL



NEW

Floor marking tape, also ideal for industrial applications.

Color: yellow / black.

Dimensions: height mm. 50, lung.33 mt.

Packing: 1/1.

ART.SB.352H LINE MARKING MACHINE

NEW



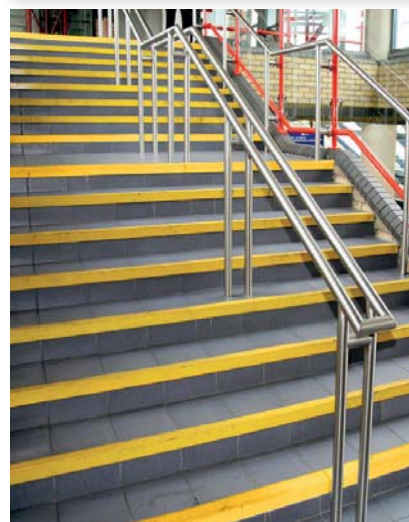
Line marking machine "NEW PERFECT STRIPER". Simple to use: with the new patented system, the can is automatically positioned in the appropriate support.

Possibility of easily adjusting both dispensing and stopping the paint, and the width of the line from 3 to 10 cm.

Increased stability: 4 large wheels that allow to draw perfectly straight lines. Reinforced frame, Wind protection structure, Adjustable arrow to follow existing or pre-tracked tracing.

(cans, item SB.354H).

ART.CB.GRP070003N ANGLE OF SIGNAL STEPS



Designed to help prevent slipping on the stairs. Suitable for use on existing steps. Beveled rear edge. Thick yellow fiberglass material mm.3.

EN 13501 - Reaction to fire ISO 9239-1, EN ISO 11925-2, DIN 51130 Classification R13.

Size cm .:
5.5x5.5x lung. 150 / cm.

Packing: 1/12 pieces.